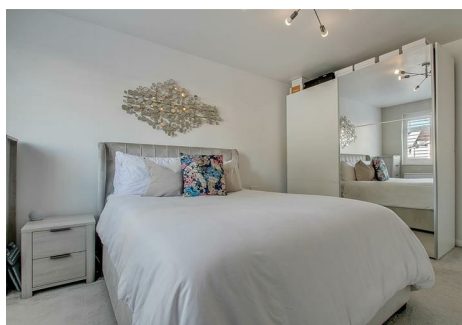


est 1979

Jeremy  
Leaf & Co.



Granville Road, London

£495,000

- Bathroom
- Council Tax Band E
- Recently Refurbished
- Garage and Off-Street Parking
- Share of Freehold
- Two Bedrooms
- Kitchen
- Service Charge £1,400 pa
- 0.5 Miles to Tube Station
- Reception

863 High Road, London, N12 8PT  
020 8446 4295

property@jeremyleaf.co.uk  
<https://www.jeremyleaf.co.uk/>

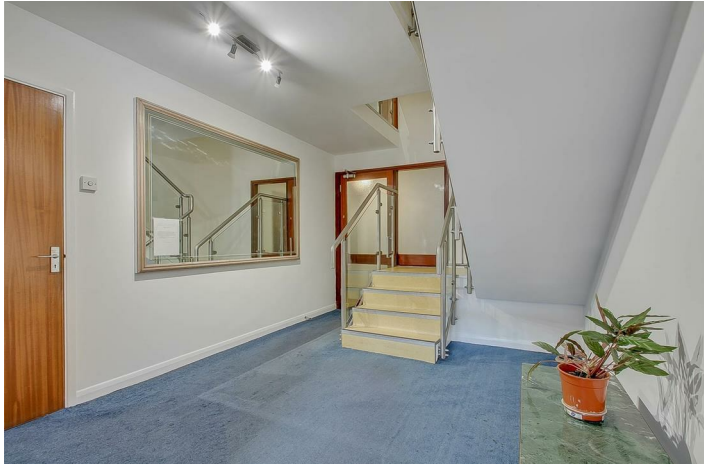
# Granville Road, London, N12 0HH

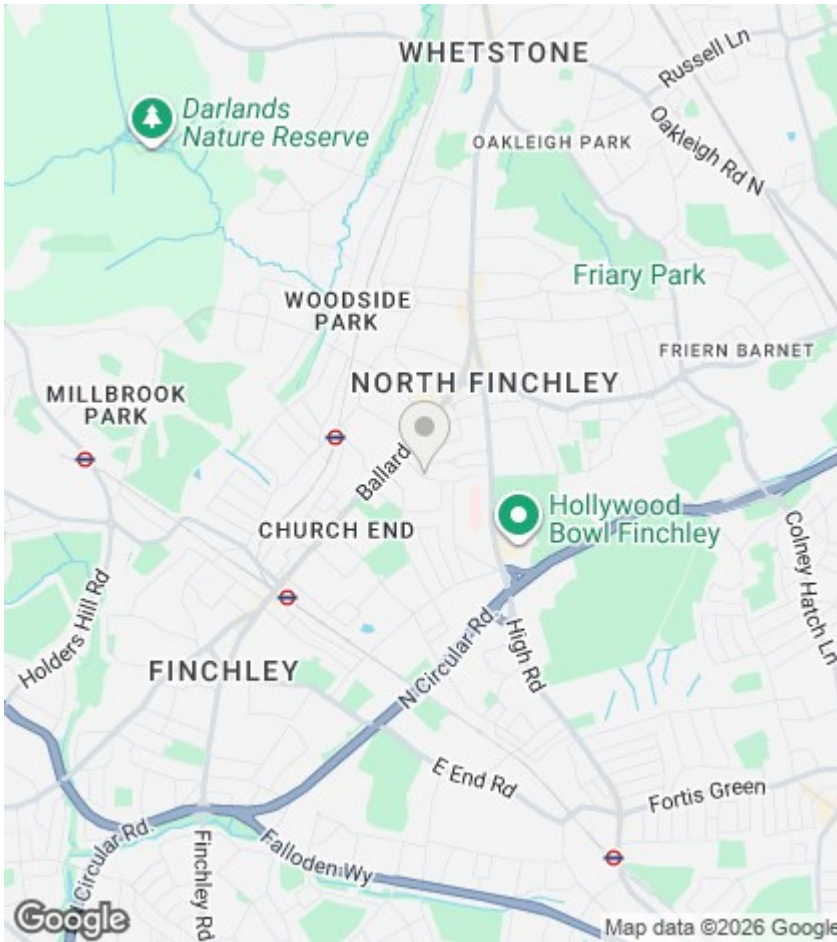
A spacious and recently refurbished two-bedroom ground floor flat situated within a well-maintained purpose-built block. The property benefits from a private garage and an off-street parking space. Ideally located close to Ballards Lane's array of shops, cafes, and transport amenities, the flat is just 0.5 miles from West Finchley tube station. Sold with share of freehold - 950 (approx) year lease. Council Tax Band E.



Council Tax Band: D







## Directions

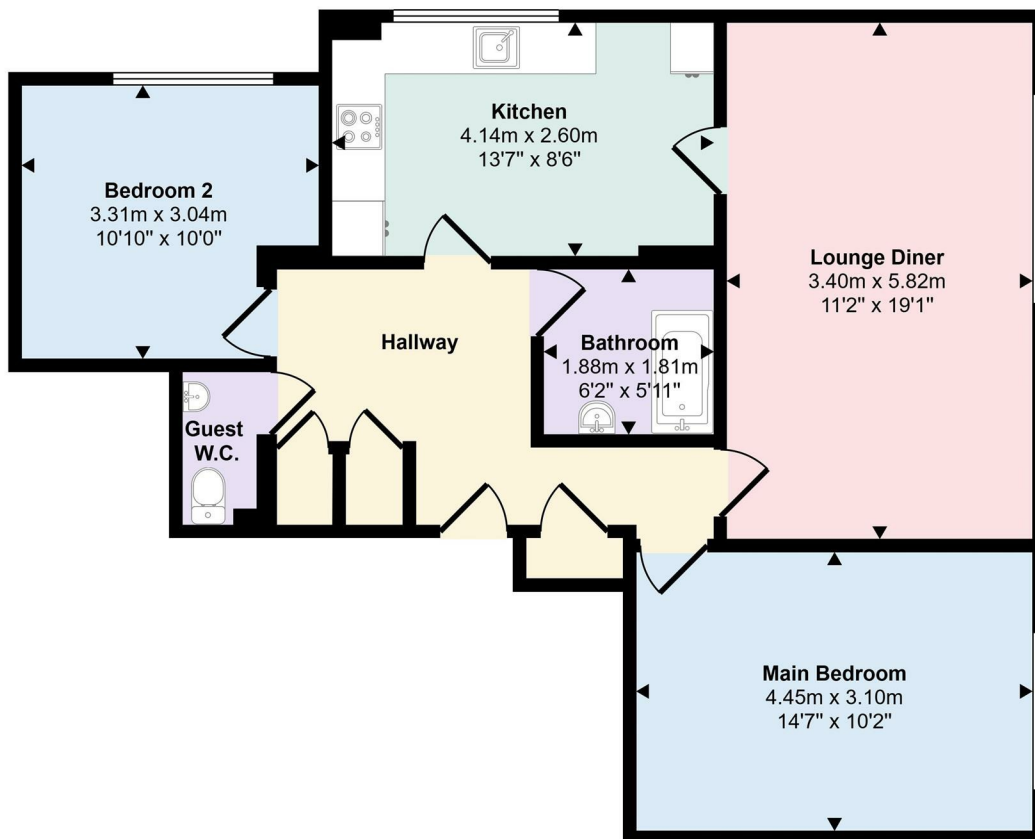
## Viewings

Viewings by arrangement only. Call 020 8446 4295 to make an appointment.

## EPC Rating:

C

Energy Efficiency Rating		Current	Potential
Very energy efficient - lower running costs			
(92 plus)	A		
(81-91)	B		
(69-80)	C	72	75
(55-68)	D		
(39-54)	E		
(21-38)	F		
(1-20)	G		
Not energy efficient - higher running costs			
England & Wales		EU Directive 2002/91/EC	



Floorplan